

MONA OFFSHORE WIND PROJECT

Tree Survey Clarification Note: Appendix 17.6 Updated Tree and Hedgerow Protection Plan Part 1

Deadline: 3

Application Reference: EN010137

Document Reference: S_D3_17.6

Document Number: MOCNS-J3303-RPS-10333

30 September 2024

F01



Image of an offshore wind farm

Document status

Version	Purpose of document	Authored by	Reviewed by	Approved by	Review date
F01	Submission at Deadline 3	RPS	Mona Offshore Wind Ltd.	Mona Offshore Wind Ltd.	30 September 2024

Prepared by:

RPS

Prepared for:

Mona Offshore Wind Ltd.



LEGEND

- Onshore Development Area
(M0_PRL_RP_0102_000_Ret1)
- Tree with numbered reference.
Canopy spread and coloured BS5837:2012 tree quality category as shown below.
= Tree details estimate (inaccessible tree)
+ = Tree in off site location
- Vegetation group with numbered reference.
Canopy extents and coloured BS5837:2012 tree quality category as shown below.
- Hedge with numbered reference.
Canopy extents and coloured BS5837:2012 tree quality category as shown below.
- Woodland with numbered reference.
Canopy extents and coloured BS5837:2012 tree quality category as shown below.
- BS 5837:2012 Tree Quality Categories - Table 1
- Category A - High quality
Category B - Moderate quality
Category C - Low quality
Category U - Unsuitable for retention
- T1 Tree or vegetation to be removed with numbered reference. Canopy spread and BS5837:2012 tree quality category.
4.6 - BS5837:2012
Root protection area (RPA) Calculated in accordance with Section 4.6 - BS5837:2012
Precautionary Root protection area (RPA) previously added to un-surveyed trees. Shown for reference.
- T2 Tree protected by Conwy Council or Denbighshire Tree Preservation Order (TPO). Bracketed number reference relates to the TPO Schedule.
- Veteran tree buffer (15 x stem Ø) (as per standing advice produced by Natural Resource Wales)
- Designated Ancient Woodland and buffer (15m offset, as per Natural Resource Wales woodland inventory, via open data publication)
- Arboricultural BRAG Assessment
Based on quantitative and professional assessment. The ranking is defined as:
- Black: Significant arboreal asset within development;
Red: High potential to constrain development;
Amber: Moderate potential to constrain development; and
Green: Low potential to constrain development
- Construction Compound or Access Area
Arboricultural constraint based on providing a construction exclusion zone (CEZ):
- Black: At all times, compound should avoid entering this area;
Red: In nearly all circumstances, compound should avoid entering this area;
Amber: In most circumstances, compound should avoid entering this area;
Green: Little or no arboricultural constraint which would affect compound location.
- Cable Crossing Technique with numbered reference
- Trenchless
Trenching / Trenchless
Trenched
- Indicative temporary protective fencing in accordance with Section 6.2 - BS5837:2012 See example, also shown within supporting report.
- Indicative temporary visual warning barrier. See example detail, also shown within supporting report.

- NOTES:
- Refer to RPS Tree Survey & Arboricultural Impact Assessment Report for further details.
 - Survey based on a visual inspection from the ground and is not intended as a full arboricultural inspection.
 - Plan produced in accordance with recommendations set out in BS 5837:2012 - Trees in relation to design, demolition and construction.
 - Due to the legal protection afforded to breeding birds vegetation removal should not take place during the bird nesting period; generally, although not restricted to, March - August inclusive.
 - Survey based upon aerial photography, therefore tree locations should be deemed as approximate, and not digitally accurate.
 - Pedestrian/vehicular emergency access routes to be maintained at all times.
 - All protective fencing to be completed and approved by LPA / CA prior to commencement of any site works.
 - All works to conform with requirements of BS 5837:2012 - Tree Works
 - BS 5837:2012 - Trees in relation to design, demolition and construction



Drawing Number:

7100

Project Name:
MONA OFFSHORE WIND PROJECT

Drawing Title:
TREE AND HEDGEROW PROTECTION PLAN

Scale
Scale@A0: Not To Scale
0 50m

Geodetic Information:
Datum: ETRS 1989
Projection: British National Grid

Data Sources: Client

Service Layer Credits: Esri, HERE, Garmin, Intermap, increment P Corp., GEBCO, USGS, FAO, NPS, NRCAN, GeoBase, IGN, Kadaster NL, Ordnance Survey, Esri Japan, METI, Esri China (Hong Kong), (c) OpenStreetMap contributors, and the GIS User Community

VER	DATE	DETAILS	BY	CHECK
01	Sept/24	Information	RC	DC



LEGEND

- Grass Development Area
(M0_PRL_SF_0162_000_Ren11)
- Tree with numbered reference.
Canopy spread and coloured BS5837:2012 tree quality category as shown below.
= Tree details estimate (inaccessible tree)
• = Tree in off site location
- G1 Vegetation group with numbered reference.
Canopy extents and coloured BS5837:2012 tree quality category as shown below.
- H1 Hedge with numbered reference.
Canopy extents and coloured BS5837:2012 tree quality category as shown below.
- W1 Woodland with numbered reference.
Canopy extents and coloured BS5837:2012 tree quality category as shown below.
- BS 5837:2012 Tree Quality Categories - Table 1
- Category A - High quality
- Category B - Moderate quality
- Category C - Low quality
- Category U - Unsuitable for retention
- T1 Tree or vegetation to be removed with numbered reference. Canopy spread and BS5837:2012 tree quality category.
- Root protection area (RPA)
Calculated in accordance with Section 4.6 - BS5837:2012
- Precautionary Root protection area (RPA) previously added to un-surveyed trees. Shown for reference.
- Tree protected by Conwy Council or Denbighshire Tree Preservation Order (TPO). Bracketed number reference relates to the TPO Schedule.
- Veteran tree buffer (15 x stem Ø) (as per standing advice produced by Natural Resource Wales)
- Designated Ancient Woodland and buffer (15m offset, as per Natural Resource Wales woodland inventory, via open data publication)

Arboricultural BRAG Assessment
Based on quantitative and professional assessment.
The ranking is defined as:

Black: Significant arboreal asset within development;

Red: High potential to constrain development;

Amber: Moderate potential to constrain development; and

Green: Low potential to constrain development

Construction Compound or Access Area
Arboricultural constraint based on providing a construction exclusion zone (CEZ):

Black: At all times, compound should avoid entering this area;

Red: In heavy all circumstances, compound should avoid entering this area;

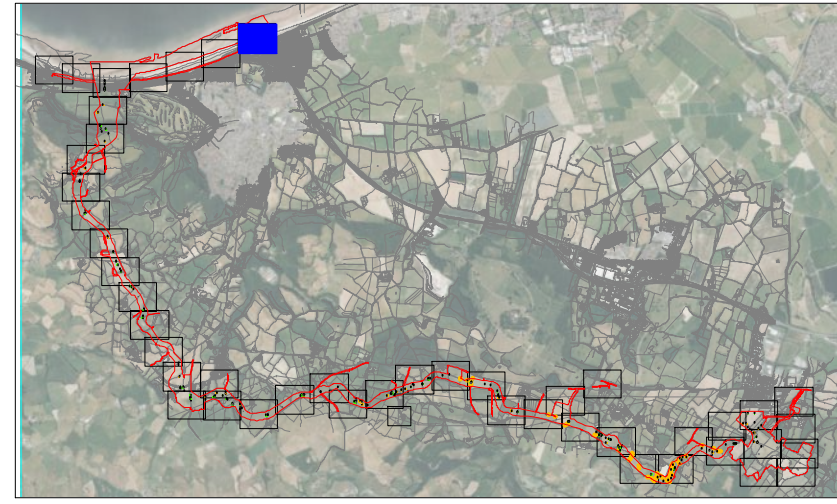
Amber: In most circumstances, compound should avoid entering this area;

Green: Little or no arboricultural constraint which would affect compound location.

- Cable Crossing Technique with numbered reference
- Trenchless
- Trenching / Trenchless
- Trenched
- Indicative temporary protective fencing in accordance with Section 6.2 - BS5837:2012
See example, also shown within supporting report.
- Indicative temporary visual warning barrier.
See example detail, also shown within supporting report.

NOTES:

- Refer to RPS Tree Survey & Arboricultural Impact Assessment Report for further details.
- Survey based on a visual inspection from the ground and is not intended as a full arboricultural inspection.
- Plan produced in accordance with recommendations set out in BS 5837:2012 - Trees in Relation to design, demolition and construction.
- Due to the legal protection afforded to breeding birds vegetation removal should not take place during the bird nesting period; generally, although not restricted to, March - August inclusive.
- Survey based upon aerial photography, therefore tree locations should be deemed as approximate, and not digitally accurate.
- Preventative vehicular emergency access routes to be maintained at all times.
- All protective fencing to be completed and approved by LPA / CA prior to commencement of any site works.
- All works to conform with requirements of:
BS 5838:2010 - Tree Works
BS 5837:2012 - Trees in relation to design, demolition and construction



Rev	Description	By	CB	Date



Drawing Number:

7101

Project Name:
MONA OFFSHORE WIND PROJECT

Drawing Title:
TREE AND HEDGEROW PROTECTION PLAN

Scale
Scale@A0: 1:500
0 50m

Geodetic Information:
Datum: ETRS 1989
Projection: British National Grid

Data Sources: Client

Service Layer Credits: Esri, HERE, Garmin, Intermap, increment P Corp., GEBCO, USGS, FAO, NPS, NRCAN, GeoBase, IGN, Kadaster NL, Ordnance Survey, Esri Japan, METI, Esri China (Hong Kong), (c) OpenStreetMap contributors, and the GIS User Community

VER	DATE	DETAILS	BY	CHECK
01	Jan/24	Comment	RC	DC
04	Sept/24	Information	RC	DC



LEGEND

- Grass Development Area
(NO_PRL_SF_002_DCO_Rev11)
- Tree with numbered reference.
Canopy spread and coloured BS5837:2012 tree quality category as shown below.
= Tree details estimate (inaccessible tree)
• = Tree in off site location
- G1 Vegetation group with numbered reference.
Canopy extents and coloured BS5837:2012 tree quality category as shown below.
- H1 Hedge with numbered reference.
Canopy extents and coloured BS5837:2012 tree quality category as shown below.
- W1 Woodland with numbered reference.
Canopy extents and coloured BS5837:2012 tree quality category as shown below.
- BS 5837:2012 Tree Quality Categories - Table 1
- Category A - High quality
- Category B - Moderate quality
- Category C - Low quality
- Category U - Unsuitable for retention
- T1 Tree or vegetation to be removed with numbered reference. Canopy spread and BS5837:2012 tree quality category.
- Root protection area (RPA)
Calculated in accordance with Section 4.6 - BS5837:2012
- Precautionary Root protection area (RPA)
previously added to un-surveyed trees.
Shown for reference.
- OT Tree protected by Conwy Council or Denbighshire Tree Preservation Order (TPO). Bracketed number reference relates to the TPO Schedule.
- Veteran tree buffer (15 x stem Ø)
(as per standing advice produced by Natural Resource Wales)
- W1 Designated Ancient Woodland and buffer (15m offset, as per Natural Resource Wales woodland inventory, via open data publication)

Arboricultural BRAG Assessment
Based on quantitative and professional assessment.
The ranking is defined as:

- Black: Significant arboreal asset within development.
- Red: High potential to constrain development;
- Amber: Moderate potential to constrain development; and
- Green: Low potential to constrain development

Construction Compound or Access Area
Arboricultural constraint based on providing a construction exclusion zone (CEZ):

Black: At all times, compound should avoid entering this area;

Red: In heavily all circumstances, compound should avoid entering this area;

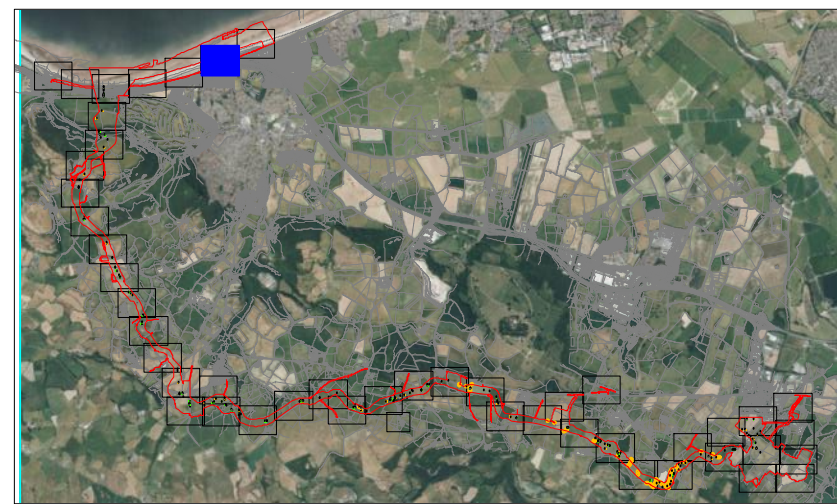
Amber: In most circumstances, compound should avoid entering this area;

Green: Little or no arboricultural constraint which would affect compound location.

- Cable Crossing Technique with numbered reference
- Trenchless
- Trenching / Trenchless
- Trenched
- Indicative temporary protective fencing in accordance with Section 6.2 - BS5837:2012
See example, also shown within supporting report.
- Indicative temporary visual warning barrier.
See example detail, also shown within supporting report.

NOTES:

- Refer to RPS Tree Survey & Arboricultural Impact Assessment Report for further details.
- Survey based on a visual inspection from the ground and is not intended as a full arboricultural inspection.
- Plan produced in accordance with recommendations set out in BS 5837:2012 - 'Trees in Relation to design, demolition and construction'.
- Due to the legal protection afforded to breeding birds vegetation removal should not take place during the bird nesting period; generally, although not restricted to, March - August inclusive.
- Survey based upon aerial photography, therefore tree locations should be deemed as approximate, and not digitally accurate.
- Predefined vehicular emergency access routes to be maintained at all times.
- All protective fencing to be completed and approved by LPA / CA prior to commencement of any site works.
- All works to conform with requirements of:
BS 5837:2012 - 'Trees in relation to design, demolition and construction'



Rev	Description	By	CB	Date



Drawing Number:

7102

VER	DATE	DETAILS	BY	CHECK
01	Jan/24	Comment	RC	DC
04	Sept/24	Information	RC	DC

Project Name:
MONA OFFSHORE WIND PROJECT

Drawing Title:
TREE AND HEDGEROW PROTECTION PLAN

Scale
Scale@A0: 1:500
0 50m

Geodetic Information:
Datum: ETRS 1989
Projection: British National Grid

Data Sources: Client

Service Layer Credits: Esri, HERE, Garmin, Intermap, increment P Corp., GEBCO, USGS, FAO, NPS, NRCAN, GeoBase, IGN, Kadaster NL, Ordnance Survey, Esri Japan, METI, Esri China (Hong Kong), (c) OpenStreetMap contributors, and the GIS User Community



LEGEND

- Ordnance Development Area
(NO_PRL_SF_0162_D00_Rev11)
- Tree with numbered reference.
Canopy spread and coloured BS5837:2012 tree quality category as shown below.
= Tree details estimate (inaccessible tree)
• = Tree in off site location
- G1 Vegetation group with numbered reference.
Canopy extents and coloured BS5837:2012 tree quality category as shown below.
- H1 Hedge with numbered reference.
Canopy extents and coloured BS5837:2012 tree quality category as shown below.
- W1 Woodland with numbered reference.
Canopy extents and coloured BS5837:2012 tree quality category as shown below.
- BS 5837:2012 Tree Quality Categories - Table 1
- Category A - High quality
- Category B - Moderate quality
- Category C - Low quality
- Category U - Unsuitable for retention
- T1 Tree or vegetation to be removed with numbered reference. Canopy spread and BS5837:2012 tree quality category.
- Root protection area (RPA)
Calculated in accordance with Section 4.6 - BS5837:2012
- Precautionary Root protection area (RPA)
previously added to un-surveyed trees. Shown for reference.
- Tree protected by Conwy Council or Denbighshire Tree Preservation Order (TPO). Bracketed number reference relates to the TPO Schedule.
- Veteran tree buffer (15 x stem Ø)
(as per standing advice produced by Natural Resource Wales)
- Designated Ancient Woodland and buffer (15m offset, as per Natural Resource Wales woodland inventory, via open data publication)

Arboricultural BRAG Assessment
Based on quantitative and professional assessment.
The ranking is defined as:

Black: Significant arboreal asset within development.

Red: High potential to constrain development;

Amber: Moderate potential to constrain development; and

Green: Low potential to constrain development

Construction Compound or Access Area
Arboricultural constraint based on providing a construction exclusion zone (CEZ):

Black: At all times, compound should avoid entering this area;

Red: In heavily all circumstances, compound should avoid entering this area.

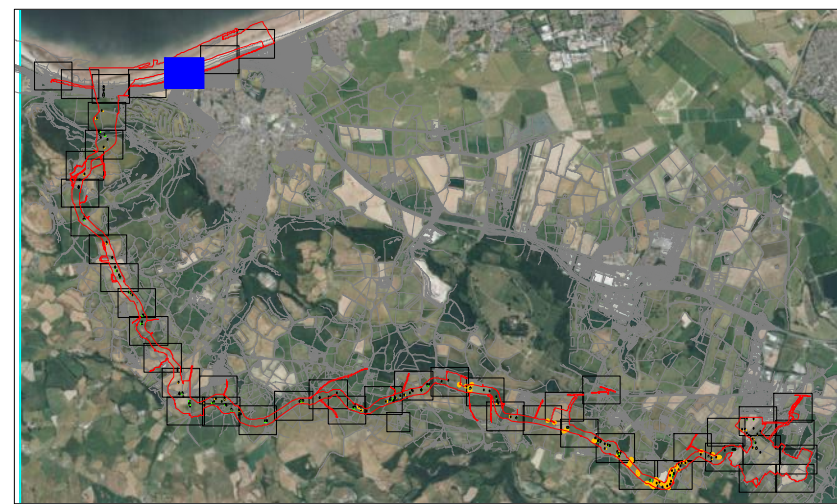
Amber: In most circumstances, compound should avoid entering this area.

Green: Little or no arboricultural constraint which would affect compound location.

- Cable Crossing Technique with numbered reference
- Trenchless
- Trenching / Trenchless
- Trenched
- Indicative temporary protective fencing in accordance with Section 6.2 - BS5837:2012
See example, also shown within supporting report.
- Indicative temporary visual warning barrier.
See example detail, also shown within supporting report.

NOTES:

- Refer to RPS Tree Survey & Arboricultural Impact Assessment Report for further details.
- Survey based on a visual inspection from the ground and is not intended as a full arboricultural inspection.
- Plan produced in accordance with recommendations set out in BS 5837:2012 - "Trees in Relation to design, demolition and construction".
- Due to the legal protection afforded to breeding birds vegetation removal should not take place during the bird nesting period; generally, although not restricted to, March - August inclusive.
- Survey based upon aerial photography, therefore tree locations should be deemed as approximate, and not digitally accurate.
- Predefined vehicular emergency access routes to be maintained at all times.
- All protective fencing to be completed and approved by LPA / CA prior to commencement of any site works.
- All works to conform with requirements of:
BS 5838:2015 - Tree Works
BS 5837:2012 - Trees in relation to design, demolition and construction



Rev	Description	By	CB	Date



Drawing Number:

7103

VER	DATE	DETAILS	BY	CHECK
01	Jan/24	Comment	RC	DC
04	Sept/24	Information	RC	DC

Project Name:
MONA OFFSHORE WIND PROJECT

Drawing Title:
TREE AND HEDGEROW PROTECTION PLAN

Scale
Scale@A0: 1:500

0 50m

Geodetic Information:
Datum: ETRS 1989
Projection: British National Grid

Data Sources: Client

Service Layer Credits: Esri, HERE, Garmin, Intermap, increment P Corp., GEBCO, USGS, FAO, NPS, NRCAN, GeoBase, IGN, Kadaster NL, Ordnance Survey, Esri Japan, METI, Esri China (Hong Kong), (c) OpenStreetMap contributors, and the GIS User Community

LEGEND

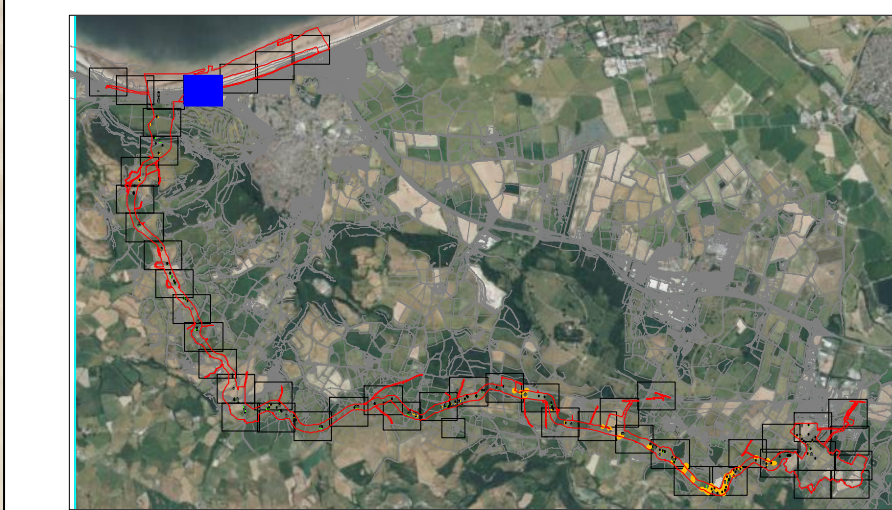
- Tree with numbered reference.
Canopy spread and coloured BS5837:2012 tree quality category as shown below.
= Tree details estimate (inaccessible tree)
• = Tree in off site location
- Vegetation group with numbered reference.
Canopy extents and coloured BS5837:2012 tree quality category as shown below.
- Hedge with numbered reference.
Canopy extents and coloured BS5837:2012 tree quality category as shown below.
- Woodland with numbered reference.
Canopy extents and coloured BS5837:2012 tree quality category as shown below.
- BS 5837:2012 Tree Quality Categories - Table 1
- Category A - High quality
- Category B - Moderate quality
- Category C - Low quality
- Category U - Unsuitable for retention
- Tree or vegetation to be removed with numbered reference. Canopy spread and BS5837:2012 tree quality category.
- Root protection area (RPA)
Calculated in accordance with Section 4.6 - BS5837:2012
- Precautionary Root protection area (RPA)
previously added to un-surveyed trees.
Shown for reference.
- Tree protected by Conwy Council or Denbighshire Tree Preservation Order (TPO). Bracketed number reference relates to the TPO Schedule.
- Veteran tree buffer (15 x stem Ø)
(as per standing advice produced by Natural Resource Wales)
- Designated Ancient Woodland and buffer (15m offset, as per Natural Resource Wales woodland inventory, via open data publication)

- Arboricultural BRAG Assessment
- Based on quantitative and professional assessment.
The ranking is defined as:
- Black: Significant arboreal asset within development.
- Red: High potential to constrain development;
- Amber: Moderate potential to constrain development; and
- Green: Low potential to constrain development

- Construction Compound or Access Area
- Arboricultural constraint based on providing a construction exclusion zone (CEZ):
- Black: At all times, compound should avoid entering this area;
- Red: In heavily all circumstances, compound should avoid entering this area;
- Amber: In most circumstances, compound should avoid entering this area;
- Green: Little or no arboricultural constraint which would affect compound location.

- Cable Crossing Technique with numbered reference
- Trenchless
- Trenching / Trenchless
- Trenched
- Indicative temporary protective fencing in accordance with Section 6.2 - BS5837:2012
See example, also shown within supporting report.
- Indicative temporary visual warning barrier.
See example detail, also shown within supporting report.

- NOTES:
- Refer to RPS Tree Survey & Arboricultural Impact Assessment Report for further details.
 - Survey based on a visual inspection from the ground and is not intended as a full arboricultural inspection.
 - Plan produced in accordance with recommendations set out in BS 5837:2012 - Trees in Relation to design, demolition and construction.
 - Due to the legal protection afforded to breeding birds vegetation removal should not take place during the bird nesting period; generally, although not restricted to, March - August inclusive.
 - Survey based upon aerial photography, therefore tree locations should be deemed as approximate, and not digitally accurate.
 - Predefined vehicular emergency access routes to be maintained at all times.
 - All protective fencing to be completed and approved by LPA / CA prior to commencement of any site works.
 - All works to conform with requirements of:
BS 5838:2010 - Tree Works
BS 5837:2012 - Trees in relation to design, demolition and construction



Rev	Description	By	CB	Date



Drawing Number:

7104

VER	DATE	DETAILS	BY	CHECK
01	Jan/24	Comment	RC	DC
04	Sept/24	Information	RC	DC

© 2023 Microsoft Corporation © 2023 Maxar ©CNES (2023) Distribution Airbus DS



Project Name: MONA OFFSHORE WIND PROJECT	Drawing Title: TREE AND HEDGEROW PROTECTION PLAN
--	--

Scale Scale@A0: 1:500

Geodetic Information: Datum: ETRS 1989 Projection: British National Grid

Data Sources: Client

Service Layer Credits: Esri, HERE, Garmin, Intermap, increment P Corp., GEBCO, USGS, FAO, NPS, NRCAN, GeoBase, IGN, Kadaster NL, Ordnance Survey, Esri Japan, METI, Esri China (Hong Kong), (c) OpenStreetMap contributors, and the GIS User Community



LEGEND

- Grass Development Area
(NO_PRL_SF_012_DCO_Rv11)
- Tree with numbered reference.
Canopy spread and coloured BS5837:2012 tree quality category as shown below.
= Tree details estimate (inaccessible tree)
• = Tree in off site location
- G1 Vegetation group with numbered reference.
Canopy extents and coloured BS5837:2012 tree quality category as shown below.
- H1 Hedge with numbered reference.
Canopy extents and coloured BS5837:2012 tree quality category as shown below.
- W1 Woodland with numbered reference.
Canopy extents and coloured BS5837:2012 tree quality category as shown below.
- BS 5837:2012 Tree Quality Categories - Table 1
- Category A - High quality
- Category B - Moderate quality
- Category C - Low quality
- Category U - Unsuitable for retention
- T1 Tree or vegetation to be removed with numbered reference. Canopy spread and BS5837:2012 tree quality category.
- Root protection area (RPA)
Calculated in accordance with Section 4.6 - BS5837:2012
- Precautionary Root protection area (RPA)
previously added to un-surveyed trees.
Shown for reference.
- Tree protected by Conwy Council or Denbighshire Tree Preservation Order (TPO). Bracketed number reference relates to the TPO Schedule.
- Veteran tree buffer (15 x stem Ø)
(as per standing advice produced by Natural Resource Wales)
- Designated Ancient Woodland and buffer (15m offset, as per Natural Resource Wales woodland inventory, via open data publication)

Arboricultural BRAG Assessment
Based on quantitative and professional assessment.
The ranking is defined as:

Black: Significant arboreal asset within development.

Red: High potential to constrain development;

Amber: Moderate potential to constrain development; and

Green: Low potential to constrain development

Construction Compound or Access Area
Arboricultural constraint based on providing a construction exclusion zone (CEZ):

Black: At all times, compound should avoid entering this area;

Red: In heavily all circumstances, compound should avoid entering this area.

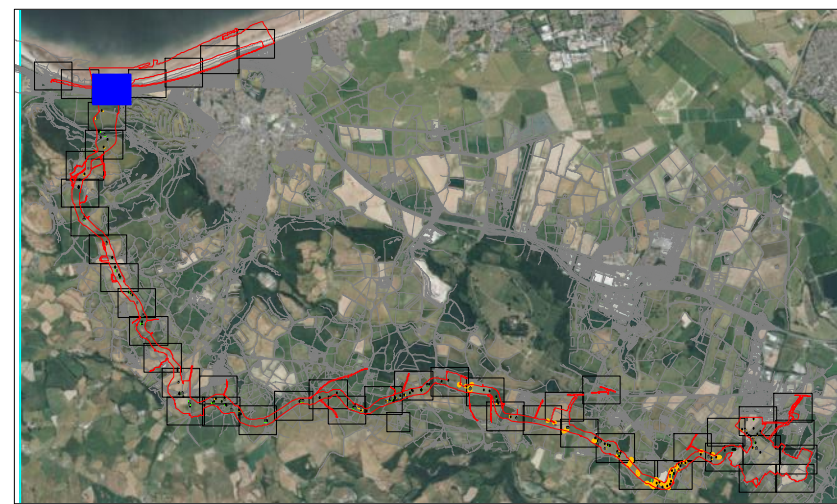
Amber: In most circumstances, compound should avoid entering this area;

Green: Little or no arboricultural constraint which would affect compound location.

- Cable Crossing Technique with numbered reference
- Trenchless
- Trenching / Trenchless
- Trenched
- Indicative temporary protective fencing in accordance with Section 6.2 - BS5837:2012
See example, also shown within supporting report.
- Indicative temporary visual warning barrier.
See example detail, also shown within supporting report.

NOTES:

- Refer to RPS Tree Survey & Arboricultural Impact Assessment Report for further details.
- Survey based on a visual inspection from the ground and is not intended as a full arboricultural inspection.
- Plan produced in accordance with recommendations set out in BS 5837:2012 - Trees in relation to design, demolition and construction.
- Due to the legal protection afforded to breeding birds vegetation removal should not take place during the bird nesting period; generally, although not restricted to, March - August inclusive.
- Survey based upon aerial photography, therefore tree locations should be deemed as approximate, and not digitally accurate.
- Predefined vehicular emergency access routes to be maintained at all times.
- All protective fencing to be completed and approved by LPA / CA prior to commencement of any site works.
- All works to conform with requirements of:
BS 5838:2015 - Tree Work
BS 5837:2012 - Trees in relation to design, demolition and construction



Rev	Description	By	CB	Date



Drawing Number:

7105

Project Name:
MONA OFFSHORE WIND PROJECT

Drawing Title:
TREE AND HEDGEROW PROTECTION PLAN

Scale
Scale@A0: 1:500

0 50m

Geodetic Information:
Datum: ETRS 1989
Projection: British National Grid

Data Sources: Client

Service Layer Credits: Esri, HERE, Garmin, Intermap, increment P Corp., GEBCO, USGS, FAO, NPS, NRCAN, GeoBase, IGN, Kadaster NL, Ordnance Survey, Esri Japan, METI, Esri China (Hong Kong), (c) OpenStreetMap contributors, and the GIS User Community





VER	DATE	DETAILS	BY	CHECK
01	Jan/24	Comment	RC	DC
04	Sept/24	Information	RC	DC






LEGEND



- | | |
|--|--|
| | Onshore Development Area
(MD_FRL_DP_012_DGO_Raw1) |
| | Tree with numbered reference.
Canopy spread and coloured BS5837:2012 tree
quality category as shown below.
= Tree details estimate (inaccessible tree)
* = Tree in off site location |
| | Vegetation group with numbered reference.
Canopy extents and coloured BS5837:2012
tree quality category as shown below. |
| | Hedge with numbered reference.
Canopy extents and coloured BS5837:2012
tree quality category as shown below. |
| | Woodland with numbered reference.
Canopy extents and coloured BS5837:2012
tree quality category as shown below. |
- BS 5837:2012 Tree Quality Categories - Table 1

- Category A - High quality
 - Category B - Moderate quality
 - Category C - Low quality
 - Category U - Unsuitable for retention
- T1**
- Tree or vegetation to be removed with numbered reference. Capacity spread and TPO for 2015 tree quality survey.
- R**
- Tree protection area (RPA)
Calculated in accordance with Section 4.6 - BS5857:2012
- Precautionary R tree protection area (RPA)**
previously added to unsurveyed trees, shown for reference.
- W1**
- Tree protected by Conwy Council or Denbighshire Tree Preservation Order (TPO). Brooked number quality relates to the TPO Schedule.
- Veteran tree buffer (15 x stem Ø)**
(as per standing order produced by Natural Resources Wales)
- Designated Ancient Woodland and buffer (15m offset, as per Natural Resource Wales woodland inventory, via open data publication)**

-  Black: Significant arboreal asset within development;
-  Red: High potential to constrain development;
-  Amber: Moderate potential to constrain development; and
-  Green: Low potential to constrain development

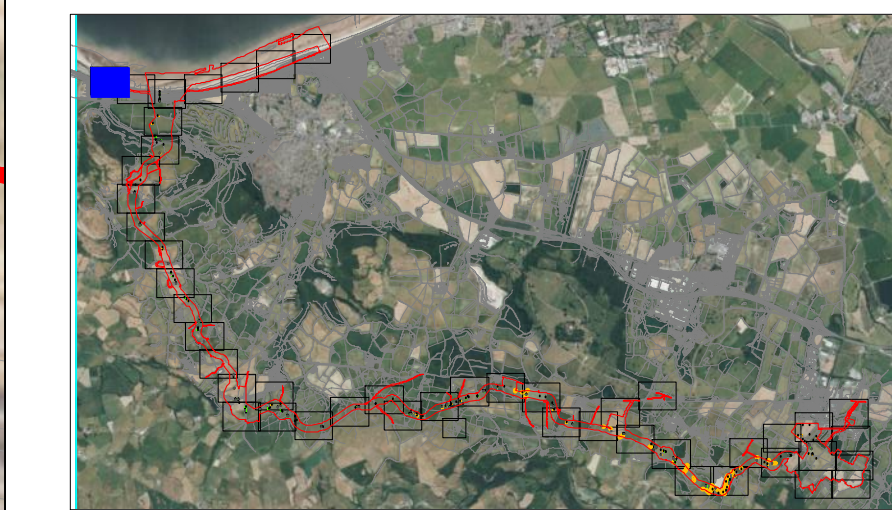
-
- Black: At all times, compound should avoid entering this area;
 Red: In nearly all circumstances, compound should avoid entering this area;
 Amber: In most circumstances, compound should avoid entering this area;
 Green: Little or no arboricultural constraint which would affect compound location.

- | | |
|---|-------------------------------|
|  | <u>Trenchless</u> |
|  | <u>Trenching / Trenchless</u> |
|  | <u>Trenched</u> |

-  Indicative temporary protective fencing in accordance with Section 6.2 – BS5837:2012. See example, also shown within supporting report.
-  Indicative temporary visual warning barrier. See example detail, also shown within supporting report.

NOTES:

- Refer to RPS Tree Survey & Arboricultural Impact Assessment Report for further details
- Survey based on a visual inspection from the ground and is not intended as a full arboricultural inspection.
- Plan produced in accordance with recommendations set out in BS 5837:2012 - 'Trees in relation to design, demolition and construction'
- Demolition protection (excavation and/or tree removal/vegetation removal) should not take place during the bird nesting period; generally, although not restricted to, March - August inclusive.
- Survey based upon aerial photography, therefore tree locations should be deemed as approximate and not geodetically accurate
- Pedestrian/vehicular emergency access routes to be maintained at all times
- All protective fencing to be completed and approved by LPA / CA prior to commencement of any site works
- All works to conform with requirements of:
 - BS 3968:2010 - Tree Works
 - BS 5837:2012 - Trees in relation to design, demolition and construction



Rev	Description	By	CB	Date
-----	-------------	----	----	------



Drawing Number:

7107

VER	DATE	DETAILS	BY	CHE
01	Jan/24	Comment	RC	DC
04	Sept/24	Information	RC	DC

Project Name:
MONA OFFSHORE WIND PROJECT

Drawing Title:
TREE AND HEDGEROW PROTECTION PLAN

Scale
Scale@A0: 1:500



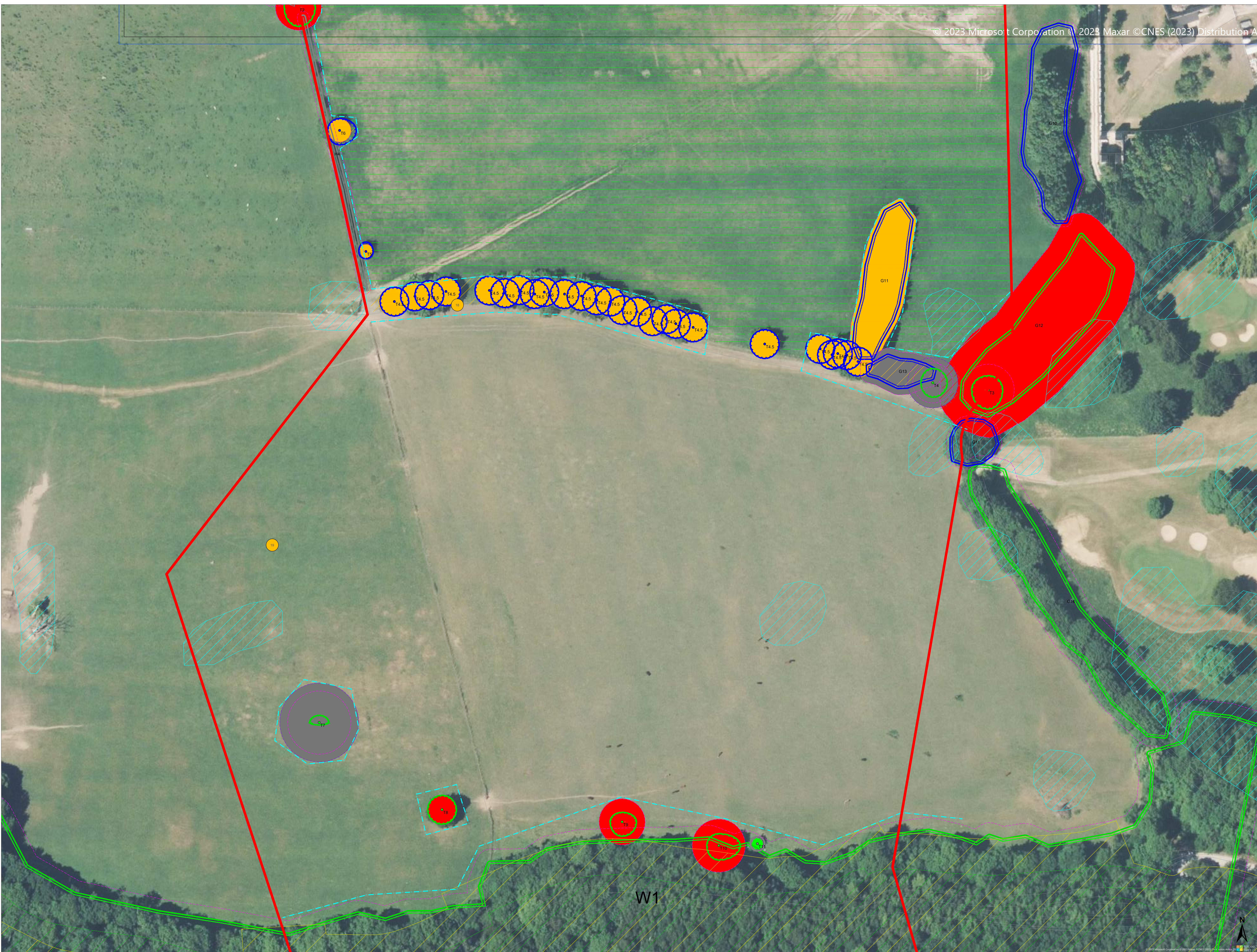
A horizontal scale bar with alternating black and white segments. The total length represents 50 meters. The bar is labeled '0' at the left end and '50m' at the right end.

Geodetic Information:
Datum: ETRS 1989
Projection: British National Grid

Data Sources: Client

Service Layer Credits: Esri, HERE, Garmin, Intermap, increment P Corp., GEBCO, USGS, FAO, NPS, NRCAN, GeoBase, IGN, Kadaster NL, Ordnance Survey, Esri Japan, METI, Esri China (Hong Kong), (c) OpenStreetMap contributors, and the GIS User Community

\\sou-th-fs-01\projects\3900 Series\JSL3999 - Morgan and Mona OWA\Arboriculture\Tech\ACAD\Current\JSL3999 - 800E TPP Cable Route.dwg
\\sou-th-fs-01\projects\3900 Series\JSL3999 - Morgan and Mona OWA\Arboriculture\Tech\ACAD\Current\JSL3999 - 800E TPP Cable Route.dwg



LEGEND

Tree with numbered reference. Canopy spread and coloured BS5837:2012 tree quality category as shown below.

= Tree details estimate (inaccessible tree)

= Tree in off site location

Vegetation group with numbered reference. Canopy extents and coloured BS5837:2012 tree quality category as shown below.

Hedge with numbered reference. Canopy extents and coloured BS5837:2012 tree quality category as shown below.

Woodland with numbered reference. Canopy extents and coloured BS5837:2012 tree quality category as shown below.

BS 5837:2012 Tree Quality Categories - Table 1

- Category A - High quality
- Category B - Moderate quality
- Category C - Low quality
- Category U - Unsuitable for retention

T1 Tree or vegetation to be removed with numbered reference. Canopy spread and BS5837:2012 tree quality category.

Root protection area (RPA) Calculated in accordance with Section 4.6 - BS5837:2012

Precautionary Root protection area (RPA) previously added to un-surveyed trees. Shown for reference.

Tree protected by Conwy Council or Denbighshire Tree Preservation Order (TPO). Bracketed number reference relates to the TPO Schedule.

Veteran tree buffer (15 x stem Ø) (as per standing advice produced by Natural Resource Wales)

Designated Ancient Woodland and buffer (15m offset, as per Natural Resource Wales woodland inventory, via open data publication)

Arboricultural BRAG Assessment
Based on quantitative and professional assessment. The ranking is defined as:

- Black: Significant arboreal asset within development;
- Red: High potential to constrain development;
- Amber: Moderate potential to constrain development; and
- Green: Low potential to constrain development

Construction Compound or Access Area
Arboricultural constraint based on providing a construction exclusion zone (CEZ):

- Black: At all times, compound should avoid entering this area;
- Red: In heavy all circumstances, compound should avoid entering this area;
- Amber: In most circumstances, compound should avoid entering this area;
- Green: Little or no arboricultural constraint which would affect compound location.

Cable Crossing Technique with numbered reference

- Trenchless
- Trenching / Trenchless
- Trenched

Indicative temporary protective fencing in accordance with Section 6.2 - BS5837:2012
See example, also shown within supporting report.

Indicative temporary visual warning barrier.
See example detail, also shown within supporting report.

NOTES:

- Refer to RPS Tree Survey & Arboricultural Impact Assessment Report for further details.
- Survey based on a visual inspection from the ground and is not intended as a full arboricultural inspection.
- Plan produced in accordance with recommendations set out in BS 5837:2012 - 'Trees in relation to design, demolition and construction'.
- Due to the legal protection afforded to breeding birds vegetation removal should not take place during the bird nesting period; generally, although not restricted to, March - August inclusive.
- Survey based upon aerial photography, therefore tree locations should be deemed as approximate, and not digitally accurate.
- Predefined vehicular emergency access routes to be maintained at all times.
- All protective fencing to be completed and approved by LPA / CA prior to commencement of any site works.
- All works to conform with requirements of:
BS 5838:2010 - Tree Works
BS 5837:2012 - Trees in relation to design, demolition and construction

Rev	Description	By	CB	Date

Partners in UK offshore wind

Drawing Number:

7108

VER	DATE	DETAILS	BY	CHECK
01	Jan/24	Comment	RC	DC
04	Sept/24	Information	RC	DC

Project Name:
MONA OFFSHORE WIND PROJECT

Drawing Title:
TREE AND HEDGEROW PROTECTION PLAN

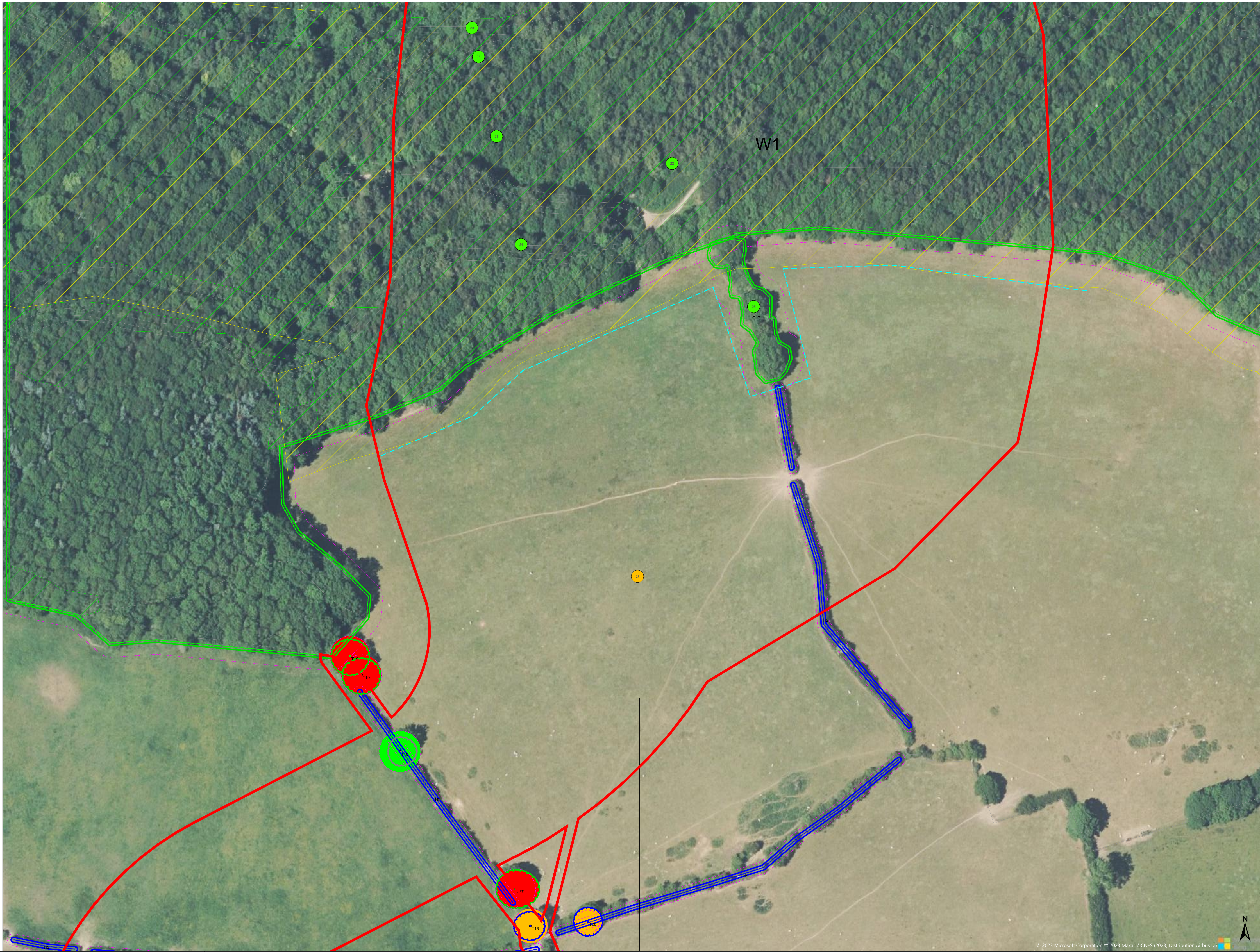
Scale
Scale@A0: 1:500

Geodetic Information:
Datum: ETRS 1989
Projection: British National Grid

Data Sources: Client

Service Layer Credits: Esri, HERE, Garmin, Intermap, increment P Corp., GEBCO, USGS, FAO, NPS, NRCAN, GeoBase, IGN, Kadaster NL, Ordnance Survey, Esri Japan, METI, Esri China (Hong Kong), (c) OpenStreetMap contributors, and the GIS User Community

\\nas01\hfd\01\projects\3900 Series\3900 Series\3999 - Morgan and Mona Offshore\Arboriculture\Tech\ACAD\Current\JSL\3999_800E_TFP_Cable Route.dwg
\\nas01\hfd\01\projects\3900 Series\3999 - Morgan and Mona Offshore\Arboriculture\Tech\ACAD\Current\JSL\3999_800E_TFP_Cable Route.dwg



LEGEND

Crucial Development Area
(NO_PRL_SF_5162_500_Rv11)

Tree with numbered reference.
Canopy spread and coloured BS5837:2012 tree quality category as shown below.
= Tree details estimate (inaccessible tree)
• = Tree in off site location

Vegetation group with numbered reference.
Canopy extents and coloured BS5837:2012 tree quality category as shown below.

Hedge with numbered reference.
Canopy extents and coloured BS5837:2012 tree quality category as shown below.

Woodland with numbered reference.
Canopy extents and coloured BS5837:2012 tree quality category as shown below.

BS 5837:2012 Tree Quality Categories - Table 1

Category A - High quality

Category B - Moderate quality

Category C - Low quality

Category U - Unsuitable for retention

T1

Tree or vegetation to be removed with
numbered reference. Canopy spread and
BS5837:2012 tree quality category.

Root protection area (RPA)
Calculated in accordance with Section
4.6 - BS5837:2012

Precautionary Root protection area (RPA)
previously added to un-surveyed trees.
Shown for reference.

Tree protected by Conwy Council or
Denbighshire Tree Preservation Order
(TPO). Bracketed number reference relates
to the TPO Schedule.

Veteran tree buffer (15 x stem Ø)
(as per standing advice produced by
Natural Resource Wales)

Designated Ancient Woodland and buffer
(15m offset, as per Natural Resource Wales
woodland inventory, via open data
publication)

Arboricultural BRAG Assessment
Based on quantitative and professional assessment.
The ranking is defined as:

Black: Significant arboreal asset within development;

Red: High potential to constrain development;

Amber: Moderate potential to constrain development; and

Green: Low potential to constrain development

Construction Compound or Access Area
Arboricultural constraint based on providing a construction
exclusion zone (CEZ):

Black: At all times, compound should avoid
entering this area;

Red: In heavy all circumstances, compound
should avoid entering this area;

Amber: In most circumstances, compound
should avoid entering this area;

Green: Little or no arboricultural constraint
which would affect compound location.

Cable Crossing Technique with numbered reference

Trenchless

Trenching / Trenchless

Trenched

Indicative temporary protective fencing in
accordance with Section 6.2 - BS5837:2012
See example, also shown within supporting
report.

Indicative temporary visual warning barrier.
See example detail, also shown within
supporting report.

NOTES:

- Refer to RPS Tree Survey & Arboricultural Impact Assessment Report for further details.
- Survey based on a visual inspection from the ground and is not intended as a full arboricultural inspection.
- Plan produced in accordance with recommendations set out in BS 5837:2012 - Trees in relation to design, demolition and construction.
- Due to the legal protection afforded to breeding birds vegetation removal should not take place during the bird nesting period; generally, although not restricted to, March - August inclusive.
- Survey based upon aerial photography, therefore tree locations should be deemed as approximate, and not digitally accurate.
- Predefined vehicular emergency access routes to be maintained at all times.
- All protective fencing to be completed and approved by LPA / CA prior to commencement of any site works.
- All works to conform with requirements of:
BS 5838:2010 - Tree Works
BS 5837:2012 - Trees in relation to design, demolition and construction

Rev	Description	By	CB	Date
-----	-------------	----	----	------

EnBW

bp

RPS

Partners in UK offshore wind

Drawing Number:

7109

VER	DATE	DETAILS	BY	CHECK
01	Jan/24	Comment	RC	DC
04	Sept/24	Information	RC	DC

Project Name:
MONA OFFSHORE WIND PROJECT

Drawing Title:
TREE AND HEDGEROW PROTECTION PLAN

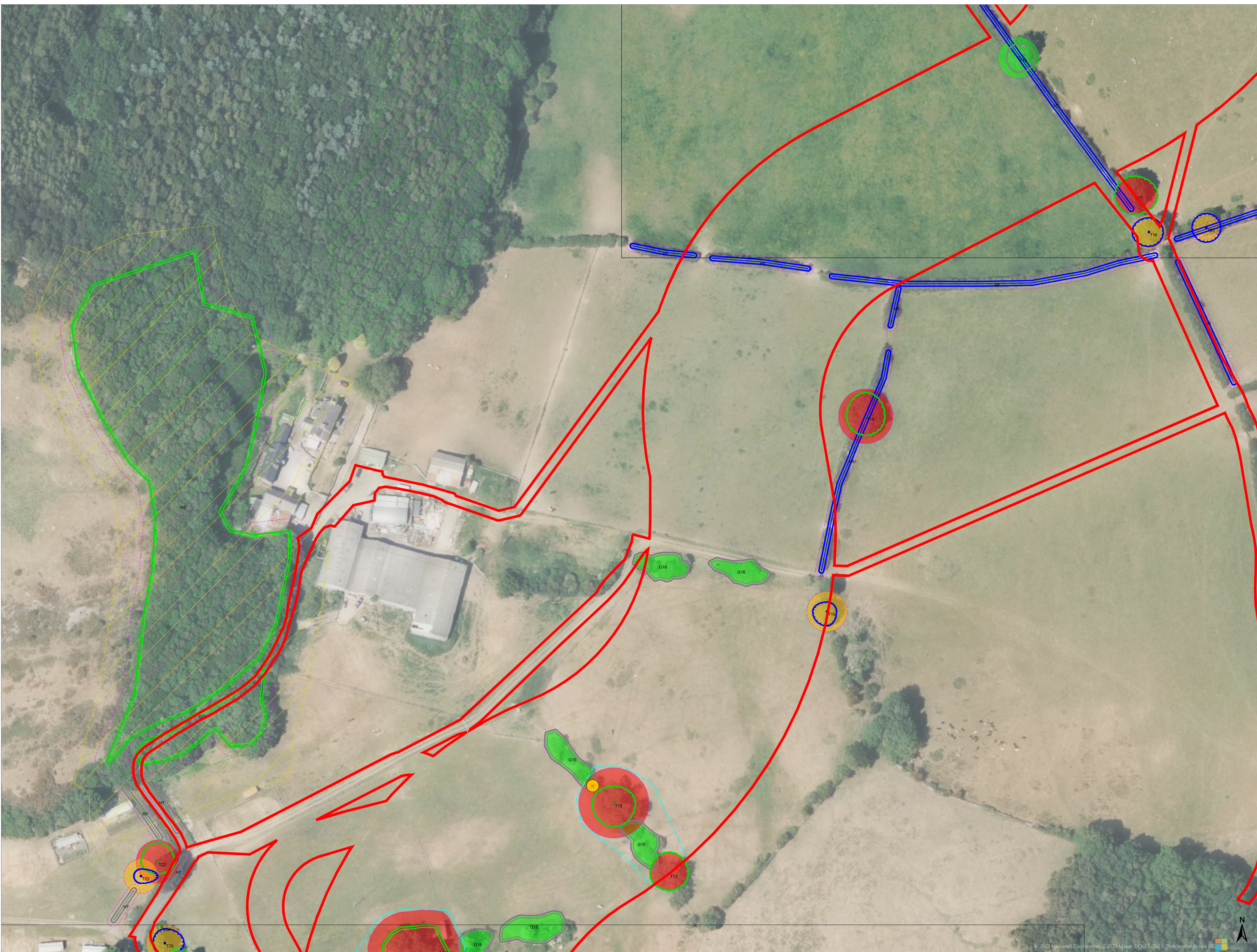
Scale
Scale@A0: 1:500

0 50m

Geodetic Information:
Datum: ETRS 1989
Projection: British National Grid

Data Sources: Client

Service Layer Credits: Esri, HERE, Garmin, Intermap, increment P Corp., GEBCO, USGS, FAO, NPS, NRCAN, GeoBase, IGN, Kadaster NL, Ordnance Survey, Esri Japan, METI, Esri China (Hong Kong), (c) OpenStreetMap contributors, and the GIS User Community



LEGEND

Construction Compound or Access Area
(M0_PRL_SF_0162_000_Rev11)

Tree with numbered reference.
Canopy spread and coloured BS5837:2012 tree quality category as shown below.
= Tree details estimate (inaccessible tree)
• = Tree in off site location

Vegetation group with numbered reference.
Canopy extents and coloured BS5837:2012 tree quality category as shown below.

Hedge with numbered reference.
Canopy extents and coloured BS5837:2012 tree quality category as shown below.

Woodland with numbered reference.
Canopy extents and coloured BS5837:2012 tree quality category as shown below.

BS 5837:2012 Tree Quality Categories - Table 1

Category A - High quality

Category B - Moderate quality

Category C - Low quality

Category U - Unsuitable for retention

T1 Tree or vegetation to be removed with
numbered reference. Canopy spread and
BS5837:2012 tree quality category.

Root protection area (RPA)
Calculated in accordance with Section
4.6 - BS5837:2012

Precautionary Root protection area (RPA)
previously added to un-surveyed trees.
Shown for reference.

Tree protected by Conwy Council or
Denbighshire Tree Preservation Order
(TPO). Bracketed number reference relates
to the TPO Schedule.

Veteran tree buffer (15 x stem Ø)
(as per standing advice produced by
Natural Resource Wales)

Designated Ancient Woodland and buffer
(15m offset, as per Natural Resource Wales
woodland inventory, via open data
publication)

Arboricultural BRAG Assessment
Based on quantitative and professional assessment.
The ranking is defined as:

Black: Significant arboreal asset within development;

Red: High potential to constrain development;

Amber: Moderate potential to constrain development; and

Green: Low potential to constrain development

Construction Compound or Access Area
Arboricultural constraint based on providing a construction
exclusion zone (CEZ):

Black: At all times, compound should avoid
entering this area;

Red: In heavily all circumstances, compound
should avoid entering this area;

Amber: In most circumstances, compound
should avoid entering this area;

Green: Little or no arboricultural constraint
which would affect compound location.

Cable Crossing Technique with numbered reference

Trenchless

Trenching / Trenchless

Trenched

Indicative temporary protective fencing in
accordance with Section 6.2 - BS5837:2012
See example, also shown within supporting
report.

Indicative temporary visual warning barrier.
See example detail, also shown within
supporting report.

NOTES:

Refer to RPS Tree Survey & Arboricultural Impact Assessment Report for
further details.

Survey based on a visual inspection from the ground and is not intended
as a full arboricultural inspection.

Plan produced in accordance with recommendations set out in BS
5837:2012 - Trees in relation to design, demolition and construction.

Due to the legal protection afforded to breeding birds vegetation removal
should not take place during the bird nesting period; generally, although
not restricted to, March - August inclusive.

Survey based upon aerial photography, therefore tree locations should be
deemed as approximate, and not digitally accurate.

Predefined vehicular emergency access routes to be maintained at all
times.

All protective fencing to be completed and approved by LPA / CA prior to
commencement of any site works.

All works to conform with requirements of:
BS 5838:2010 - Tree Works
BS 5837:2012 - Trees in relation to design, demolition
and construction

Rev	Description	By	CB	Date
-----	-------------	----	----	------

Partners in UK offshore wind

Drawing Number:

7110

VER	DATE	DETAILS	BY	CHECK
01	Jan/24	Comment	RC	DC
04	Sept/24	Information	RC	DC

LEGEND

- Orange Development Area
(MO_PRL_SF_0162_000_Ret1)
- Tree with numbered reference.
Canopy spread and coloured BS5837:2012 tree quality category as shown below.
= Tree details estimate (inaccessible tree)
• = Tree in off site location
- Vegetation group with numbered reference.
Canopy extents and coloured BS5837:2012 tree quality category as shown below.
- Hedge with numbered reference.
Canopy extents and coloured BS5837:2012 tree quality category as shown below.
- Woodland with numbered reference.
Canopy extents and coloured BS5837:2012 tree quality category as shown below.

BS 5837:2012 Tree Quality Categories - Table 1

- Category A - High quality
- Category B - Moderate quality
- Category C - Low quality
- Category U - Unsuitable for retention

- Tree or vegetation to be removed with
numbered reference. Canopy spread and
BS5837:2012 tree quality category.
- Root protection area (RPA)
Calculated in accordance with Section
4.6 - BS5837:2012
- Precautionary Root protection area (RPA)
previously added to un-surveyed trees.
Shown for reference.
- Tree protected by Conwy Council or
Denbighshire Tree Preservation Order
(TPO). Bracketed number reference relates
to the TPO Schedule.
- Veteran tree buffer (15 x stem Ø)
(as per standing advice produced by
Natural Resource Wales)
- Designated Ancient Woodland and buffer
(15m offset, as per Natural Resource Wales
woodland inventory, via open data
publication)

Arboricultural BRAG Assessment
Based on quantitative and professional assessment.
The ranking is defined as:

- Black: Significant arboreal asset within development;
- Red: High potential to constrain development;
- Amber: Moderate potential to constrain development; and
- Green: Low potential to constrain development

Construction Compound or Access Area
Arboricultural constraint based on providing a construction
exclusion zone (CEZ):

- Black: At all times, compound should avoid
entering this area;
- Red: In heavily all circumstances, compound
should avoid entering this area;
- Amber: In most circumstances, compound
should avoid entering this area;
- Green: Little or no arboricultural constraint
which would affect compound location.

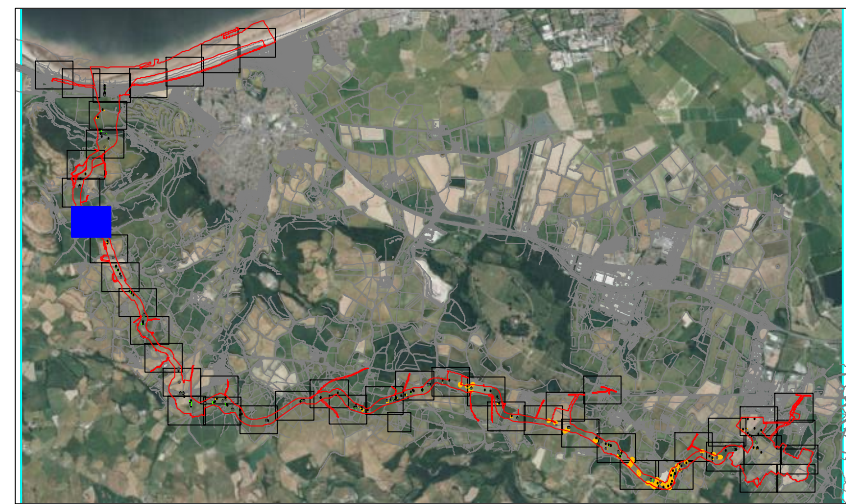
Cable Crossing Technique with numbered reference

- Trenchless
- Trenching / Trenchless
- Trenched

- Indicative temporary protective fencing in
accordance with Section 6.2 - BS5837:2012
See example, also shown within supporting
report.
- Indicative temporary visual warning barrier.
See example detail, also shown within
supporting report.

NOTES:

- Refer to RPS Tree Survey & Arboricultural Impact Assessment Report for
further details.
- Survey based on a visual inspection from the ground and is not intended
as a full arboricultural inspection.
- Plan produced in accordance with recommendations set out in BS
5837:2012 - Trees in relation to design, demolition and construction.
- Due to the legal protection afforded to breeding birds vegetation removal
should not take place during the bird nesting period; generally, although
not restricted to, March - August inclusive.
- Survey based upon aerial photography, therefore tree locations should be
deemed as approximate, and not digitally accurate.
- Predefined vehicular emergency access routes to be maintained at all
times.
- All protective fencing to be completed and approved by LPA / CA prior to
commencement of any site works.
- All works to conform with requirements of:
BS 5838:2010 - Tree Works
BS 5837:2012 - Trees in relation to design, demolition
and construction



Rev	Description	By	CB	Date



Drawing Number:

7112

VER	DATE	DETAILS	BY	CHECK
01	Jan/24	Comment	RC	DC
04	Sept/24	Information	RC	DC

© 2023 Microsoft Corporation © 2023 Maxar © CNES (L233) Distribution Airbus DS



Project Name:
MONA OFFSHORE WIND PROJECT

Drawing Title:
TREE AND HEDGEROW PROTECTION PLAN

Scale
Scale@A0: 1:500
0 50m

Geodetic Information:
Datum: ETRS 1989
Projection: British National Grid

Data Sources: Client

Service Layer Credits: Esri, HERE, Garmin, Intermap, increment P Corp., GEBCO, USGS, FAO, NPS, NRCAN, GeoBase, IGN, Kadaster NL, Ordnance Survey, Esri Japan, METI, Esri China (Hong Kong), (c) OpenStreetMap contributors, and the GIS User Community



LEGEND

- Grass Development Area**
(MD_PRL_SF_0162_000_Rv11)
- Tree with numbered reference.
Canopy spread and coloured BS5837:2012 tree quality category as shown below.
= Tree details estimate (inaccessible tree)
+ = Tree in off site location
- Vegetation group with numbered reference.
Canopy extents and coloured BS5837:2012 tree quality category as shown below.
- Hedge with numbered reference.
Canopy extents and coloured BS5837:2012 tree quality category as shown below.
- Woodland with numbered reference.
Canopy extents and coloured BS5837:2012 tree quality category as shown below.
- BS 5837:2012 Tree Quality Categories - Table 1
- Category A - High quality
 - Category B - Moderate quality
 - Category C - Low quality
 - Category U - Unsuitable for retention
- Tree or vegetation to be removed with numbered reference. Canopy spread and BS5837:2012 tree quality category.
- Root protection area (RPA)
Calculated in accordance with Section 4.6 - BS5837:2012
- Precautionary Root protection area (RPA)
previously added to un-surveyed trees.
Shown for reference.
- Tree protected by Conwy Council or Denbighshire Tree Preservation Order (TPO). Bracketed number reference relates to the TPO Schedule.
- Veteran tree buffer (15 x stem Ø)
(as per standing advice produced by Natural Resource Wales)
- Designated Ancient Woodland and buffer (15m offset, as per Natural Resource Wales woodland inventory, via open data publication)

Arboricultural BRAG Assessment
Based on quantitative and professional assessment.
The ranking is defined as:

- Black: Significant arboreal asset within development;
- Red: High potential to constrain development;
- Amber: Moderate potential to constrain development; and
- Green: Low potential to constrain development

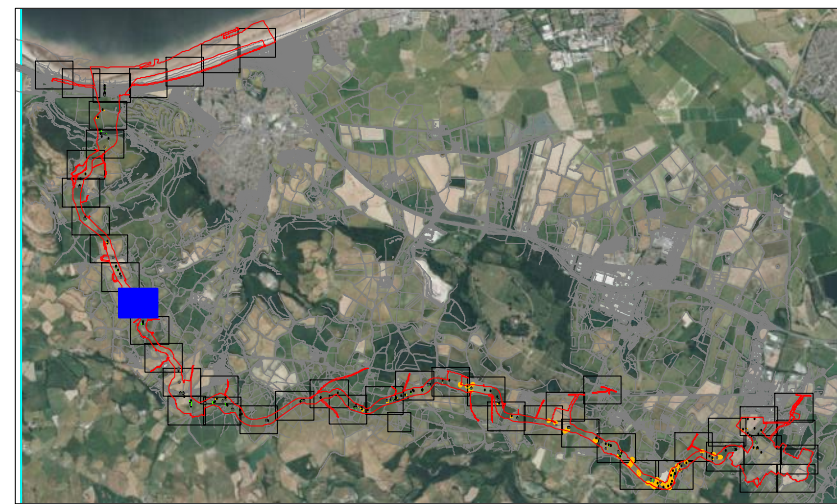
Construction Compound or Access Area
Arboricultural constraint based on providing a construction exclusion zone (CEZ):

- Black: At all times, compound should avoid entering this area;
- Red: In heavy all circumstances, compound should avoid entering this area;
- Amber: In most circumstances, compound should avoid entering this area;
- Green: Little or no arboricultural constraint which would affect compound location.

- Cable Crossing Technique with numbered reference**
- Trenchless
 - Trenching / Trenchless
 - Trenched
- Indicative temporary protective fencing in accordance with Section 6.2 - BS5837:2012
See example, also shown within supporting report.
- Indicative temporary visual warning barrier.
See example detail, also shown within supporting report.

NOTES:

- Refer to RPS Tree Survey & Arboricultural Impact Assessment Report for further details.
- Survey based on a visual inspection from the ground and is not intended as a full arboricultural inspection.
- Plan produced in accordance with recommendations set out in BS 5837:2012 - 'Trees in relation to design, demolition and construction'.
- Due to the legal protection afforded to breeding birds vegetation removal should not take place during the bird nesting period; generally, although not restricted to, March - August inclusive.
- Survey based upon aerial photography, therefore tree locations should be deemed as approximate, and not digitally accurate.
- Preferential vehicular emergency access routes to be maintained at all times.
- All protective fencing to be completed and approved by LPA / CA prior to commencement of any site works.
- All works to conform with requirements of:
BS 5838:2010 - Tree Works
BS 5837:2012 - Trees in relation to design, demolition and construction



Rev	Description	By	CB	Date



Drawing Number:

7115

Project Name:
MONA OFFSHORE WIND PROJECT

Drawing Title:
TREE AND HEDGEROW PROTECTION PLAN

Scale
Scale@A0: 1:500
0 50m

Geodetic Information:
Datum: ETRS 1989
Projection: British National Grid

Data Sources: Client

Service Layer Credits: Esri, HERE, Garmin, Intermap, increment P Corp., GEBCO, USGS, FAO, NPS, NRCAN, GeoBase, IGN, Kadaster NL, Ordnance Survey, Esri Japan, METI, Esri China (Hong Kong), (c) OpenStreetMap contributors, and the GIS User Community

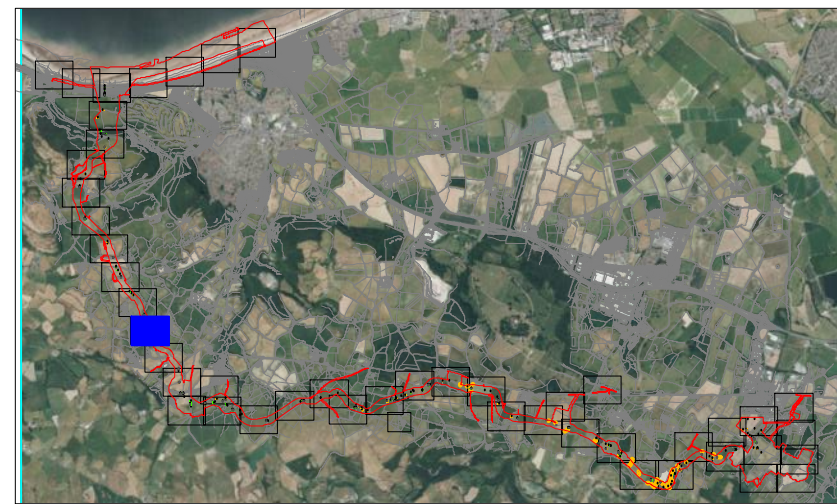


LEGEND

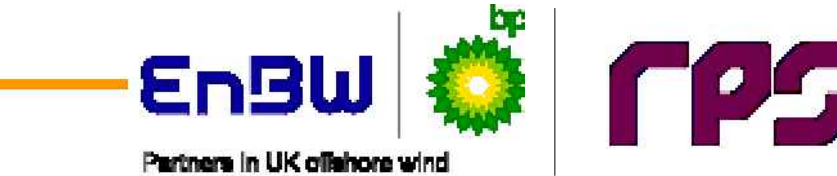
- Grass Development Area
(M0_PRL_SF_0162_000_Ret11)
- Tree with numbered reference.
Canopy spread and coloured BS5837:2012 tree quality category as shown below.
= Tree details estimate (inaccessible tree)
• = Tree in off site location
- Vegetation group with numbered reference.
Canopy extents and coloured BS5837:2012 tree quality category as shown below.
- Hedge with numbered reference.
Canopy extents and coloured BS5837:2012 tree quality category as shown below.
- Woodland with numbered reference.
Canopy extents and coloured BS5837:2012 tree quality category as shown below.
- BS 5837:2012 Tree Quality Categories - Table 1
- Category A - High quality
 - Category B - Moderate quality
 - Category C - Low quality
 - Category U - Unsuitable for retention
- Tree or vegetation to be removed with numbered reference. Canopy spread and BS5837:2012 tree quality category.
- Root protection area (RPA)
Calculated in accordance with Section 4.6 - BS5837:2012
- Precautionary Root protection area (RPA)
Previously added to un-surveyed trees. Shown for reference.
- Tree protected by Conwy Council or Denbighshire Tree Preservation Order (TPO). Bracketed number reference relates to the TPO Schedule.
- Veteran tree buffer (15 x stem Ø)
(as per standing advice produced by Natural Resource Wales)
- Designated Ancient Woodland and buffer (15m offset, as per Natural Resource Wales woodland inventory, via open data publication)
- Arboricultural BRAG Assessment
Based on quantitative and professional assessment. The ranking is defined as:
- Black: Significant arboreal asset within development;
 - Red: High potential to constrain development;
 - Amber: Moderate potential to constrain development; and
 - Green: Low potential to constrain development
- Construction Compound or Access Area
Arboricultural constraint based on providing a construction exclusion zone (CEZ):
- Black: At all times, compound should avoid entering this area;
 - Red: In heavy all circumstances, compound should avoid entering this area;
 - Amber: In most circumstances, compound should avoid entering this area;
 - Green: Little or no arboricultural constraint which would affect compound location.
- Cable Crossing Technique with numbered reference
- Trenchless
 - Trenching / Trenchless
 - Trenched
- Indicative temporary protective fencing in accordance with Section 6.2 - BS5837:2012
See example, also shown within supporting report.
- Indicative temporary visual warning barrier.
See example detail, also shown within supporting report.

NOTES:

- Refer to RPS Tree Survey & Arboricultural Impact Assessment Report for further details.
- Survey based on a visual inspection from the ground and is not intended as a full arboricultural inspection.
- Plan produced in accordance with recommendations set out in BS 5837:2012 - 'Trees in relation to design, demolition and construction'.
- Due to the legal protection afforded to breeding birds vegetation removal should not take place during the bird nesting period; generally, although not restricted to, March - August inclusive.
- Survey based upon aerial photography, therefore tree locations should be deemed as approximate, and not digitally accurate.
- Provisional vehicular emergency access routes to be maintained at all times.
- All protective fencing to be completed and approved by LPA / CA prior to commencement of any site works.
- All works to conform with requirements of:
BS 5838:2010 - Tree Works
BS 5837:2012 - Trees in relation to design, demolition and construction



Rev	Description	By	CB	Date



Drawing Number:

7116

VER	DATE	DETAILS	BY	CHECK
01	Jan/24	Comment	RC	DC
04	Sept/24	Information	RC	DC

Project Name:
MONA OFFSHORE WIND PROJECT

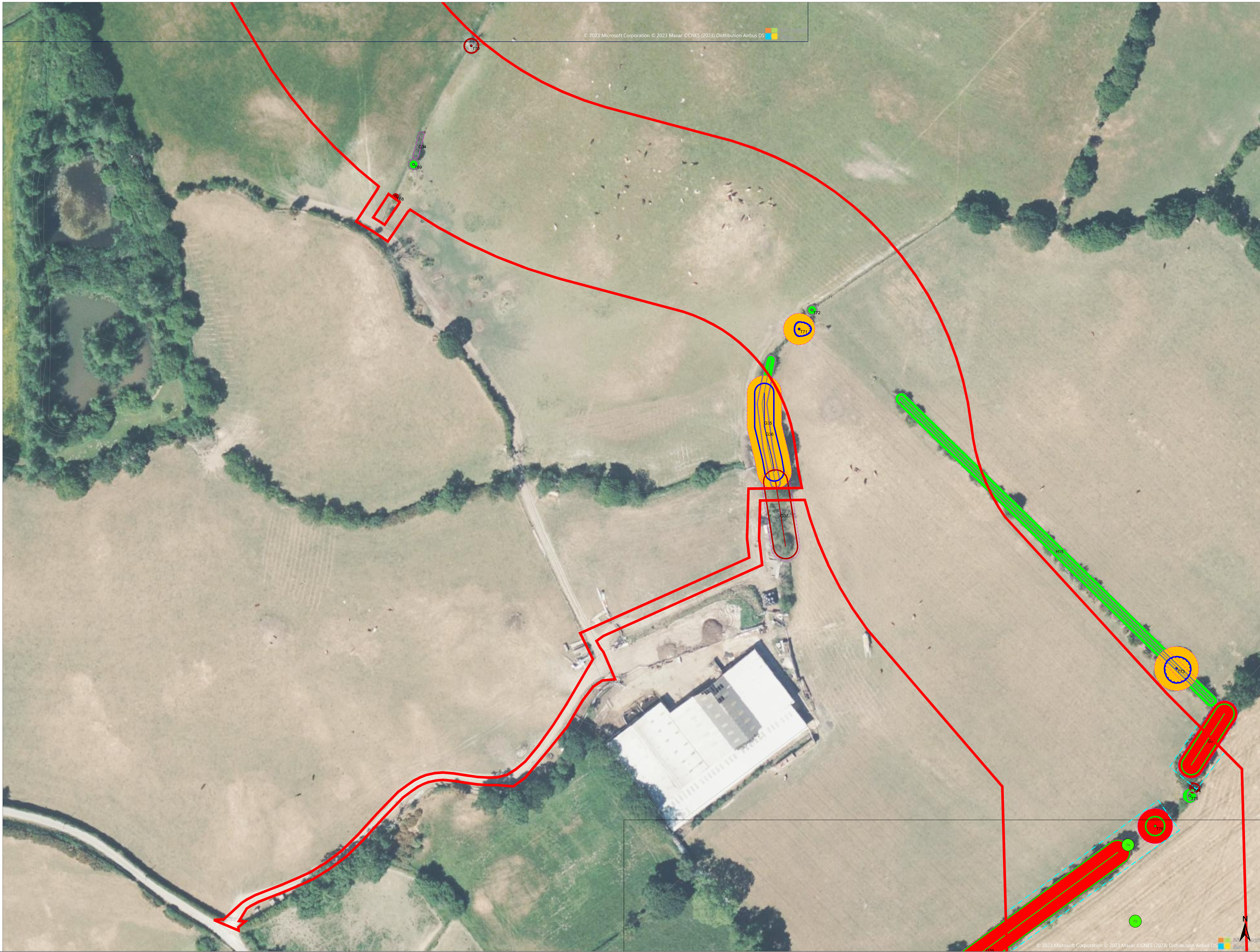
Drawing Title:
TREE AND HEDGEROW PROTECTION PLAN

Scale
Scale@A0: 1:500
0 50m

Geodetic Information:
Datum: ETRS 1989
Projection: British National Grid

Data Sources: Client

Service Layer Credits: Esri, HERE, Garmin, Intermap, increment P Corp., GEBCO, USGS, FAO, NPS, NRCAN, GeoBase, IGN, Kadaster NL, Ordnance Survey, Esri Japan, METI, Esri China (Hong Kong), (c) OpenStreetMap contributors, and the GIS User Community



LEGEND

Grass Development Area
(NO_PRL_SF_0162_000_Rv11)

Tree with numbered reference.
Canopy spread and coloured BS5837:2012 tree quality category as shown below.
= Tree details estimate (inaccessible tree)
• = Tree in off site location

Vegetation group with numbered reference.
Canopy extents and coloured BS5837:2012 tree quality category as shown below.

Hedge with numbered reference.
Canopy extents and coloured BS5837:2012 tree quality category as shown below.

Woodland with numbered reference.
Canopy extents and coloured BS5837:2012 tree quality category as shown below.

BS 5837:2012 Tree Quality Categories - Table 1

Category A - High quality

Category B - Moderate quality

Category C - Low quality

Category U - Unsuitable for retention

Tree or vegetation to be removed with
numbered reference. Canopy spread and
BS5837:2012 tree quality category.

Root protection area (RPA)
Calculated in accordance with Section
4.6 - BS5837:2012

Precautionary Root protection area (RPA)
previously added to un-surveyed trees.
Shown for reference.

Tree protected by Conwy Council or
Denbighshire Tree Preservation Order
(TPO). Bracketed number reference relates
to the TPO Schedule.

Veteran tree buffer (15 x stem Ø)
(as per standing advice produced by
Natural Resource Wales)

Designated Ancient Woodland and buffer
(15m offset, as per Natural Resource Wales
woodland inventory, via open data
publication)

Arboricultural BRAG Assessment
Based on quantitative and professional assessment.
The ranking is defined as:

Black: Significant arboreal asset within development;

Red: High potential to constrain development;

Amber: Moderate potential to constrain development; and

Green: Low potential to constrain development

Black: At all times, compound should avoid
entering this area;

Red: In heavy all circumstances, compound
should avoid entering this area;

Amber: In most circumstances, compound
should avoid entering this area;

Green: Little or no arboricultural constraint
which would affect compound location.

Cable Crossing Technique with numbered reference

Trenchless

Trenching / Trenchless

Trenched

Indicative temporary protective fencing in
accordance with Section 6.2 - BS5837:2012
See example, also shown within supporting
report.

Indicative temporary visual warning barrier.
See example detail, also shown within
supporting report.

NOTES:

Refer to RPS Tree Survey & Arboricultural Impact Assessment Report for
further details.

Survey based on a visual inspection from the ground and is not intended
as a full arboricultural inspection.

Plan produced in accordance with recommendations set out in BS
5837:2012 - Trees in relation to design, demolition and construction.

Due to the legal protection afforded to breeding birds vegetation removal
should not take place during the bird nesting period; generally, although
not restricted to, March - August inclusive.

Survey based upon aerial photography, therefore tree locations should be
deemed as approximate, and not digitally accurate.

Predefined vehicular emergency access routes to be maintained at all
times.

All protective fencing to be completed and approved by LPA / CA prior to
commencement of any site works.

All works to conform with requirements of:
BS 5837:2012 - Tree Works
BS 5837:2012 - Trees in relation to design, demolition
and construction

Rev	Description	By	CB	Date

Partners in UK offshore wind

Drawing Number:

7117

VER	DATE	DETAILS	BY	CHECK
01	Jan/24	Comment	RC	DC
04	Sept/24	Information	RC	DC

Project Name:
MONA OFFSHORE WIND PROJECT

Drawing Title:
TREE AND HEDGEROW PROTECTION PLAN

Scale
Scale@A0: 1:500
0 50m

Geodetic Information:
Datum: ETRS 1989
Projection: British National Grid

Data Sources: Client

Service Layer Credits: Esri, HERE, Garmin, Intermap, increment P Corp., GEBCO, USGS, FAO, NPS, NRCAN, GeoBase, IGN, Kadaster NL, Ordnance Survey, Esri Japan, METI, Esri China (Hong Kong), (c) OpenStreetMap contributors, and the GIS User Community

